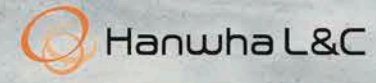


Hanex Solid Surfaces



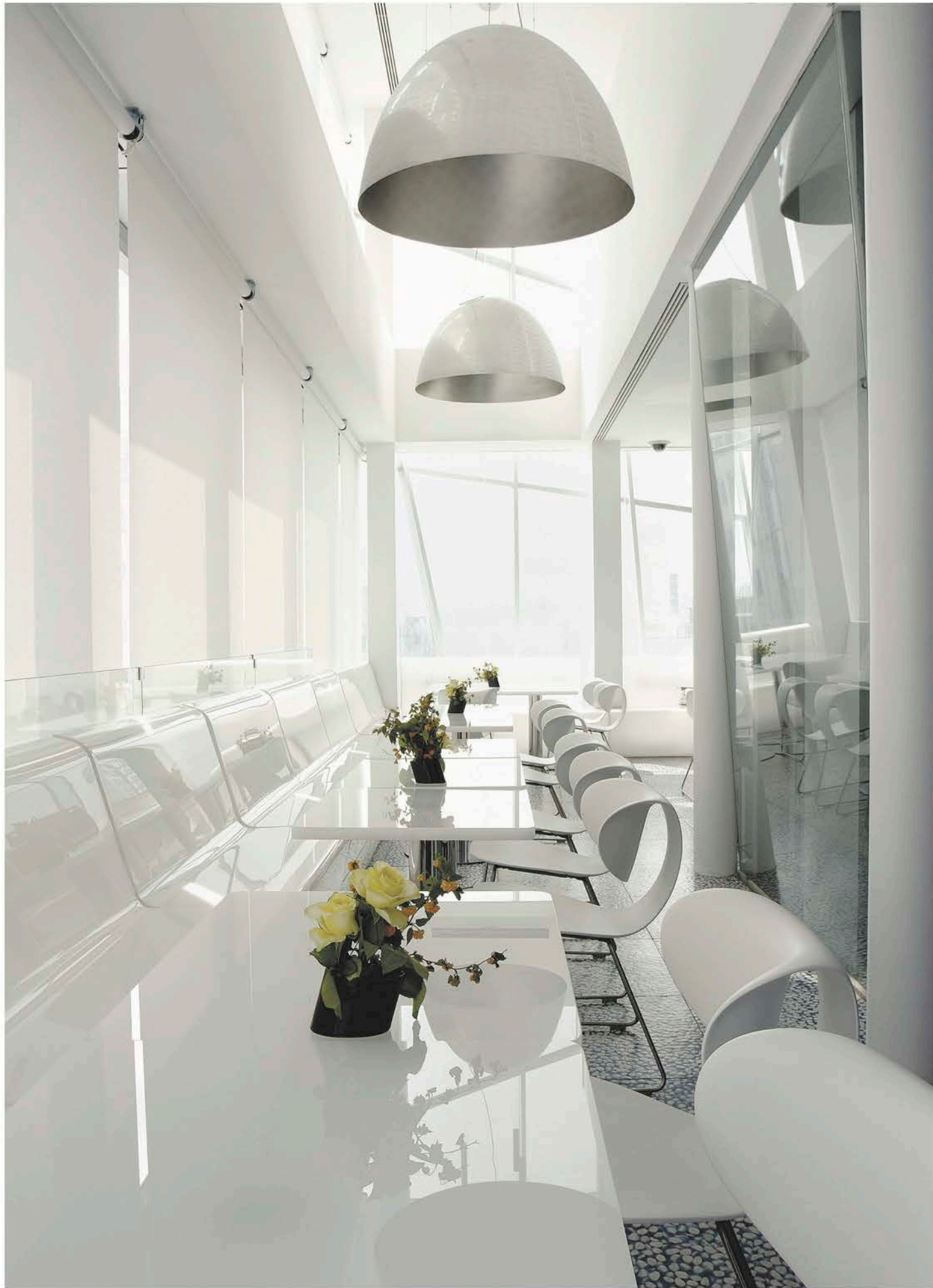
Hanex[®] Solid Surfaces
Reference Book

Hanwha L&C Europe GmbH

Düsseldorfer Str. 13 | 65760 Eschborn | Germany
Tel. +49 6196 5869 025 | Fax. +49 6196 5869 019 | Mobil. +49 1520 2475 403 | info@hanwhasurfaces.eu
www.hanwhasurfaces.eu

published in 2017
Hanwha L&C





Hanex® Solid Surfaces

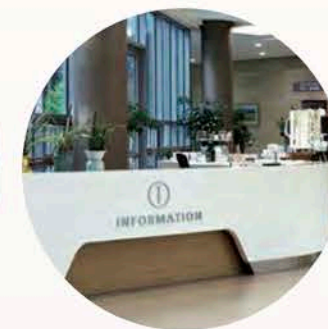
Design Flexibility · Durability · Beauty

CONTENTS

- 04 Introduction
- 06 Stratum
- 16 Bellissimo
- 28 Project References
- 54 Color Index
- 58 Sink & Bowl Program
- 60 Technical Data



Facade



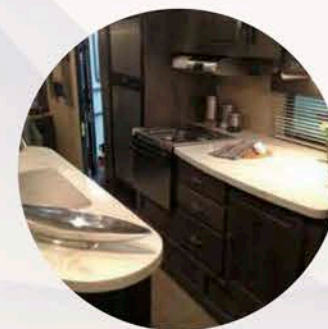
Hospital



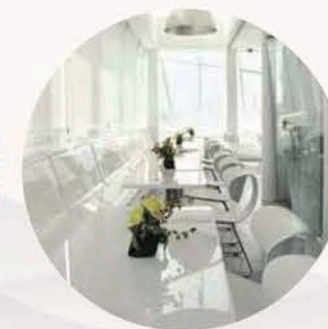
Office



Public Area



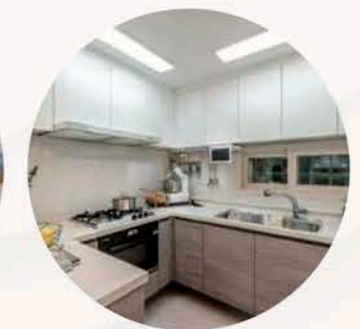
Recreational Vehicles



Restaurant



Bath



Kitchen

Location Amsterdam, Netherlands
Color S-008 N-White
Project SSS

Hanex®

combines imagination and reality, today and tomorrow, nature and urban environment

The entrepreneurial passion for seeing change as opportunity and never standing still has made Hanwha L&C as a front runner within the solid surface market. With our brand Hanex®, we offer you breath taking patterns and homogenous structures all through the entire material by using the most advanced technology.

Our vision is to innovate your world. The only limitation of Hanex® is your imagination.

- Easy to fabricate designs envisioned by designers and architects
- Highly durable
- Maintains its colour and shape
- Resistant to heat, mould, pollutants and bacteria
- Renewable, repairable & eco friendly
- Easy to maintain – scratch & stain resistant
- Extensive colour range
- 10 years limited warranty
- Endless design possibilities
- Hanex® achieves the highest standard for classification – en13501-1b

STRATUM

Unsere Stratum-Kollektion bildet die Vielfalt der Natur aus einer globalen Perspektive ab und vereint in einer einzigartigen Komposition sanfte, pastellfarbene Töne mit kontrastreichen, organischen Mustern.

Entdecken Sie die facettenreiche Vorlage der Natur in unserem neuen Sortiment und erblicken Sie die Erde mit anderen Augen. Erzeugen Sie Ihre eigene, individuelle Atmosphäre, die von der Tiefe und Grenzenlosigkeit des Gesteins geprägt ist.

Stratum series is inspired by nature in a worldly perspective and soft range of colors with unique, organic patterns. You discover the artistic, unconventional scene of the nature. Enjoy the new view of the earth. Create your own, unique and long-lasting atmosphere in the style of the depth and boundlessness of stone.



DECOR ST-106 Grenicio

Color Index

Stratum Travertine



ST-201 Romano



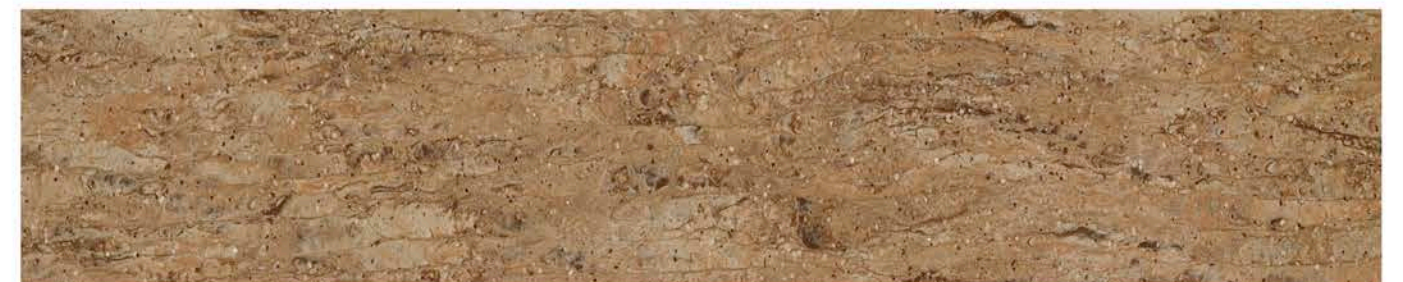
ST-205 Caramel Drizzle



ST-207 Crunch Truffle



ST-202 Walnut



ST-203 Albero

Color Index

Stratum Travertine

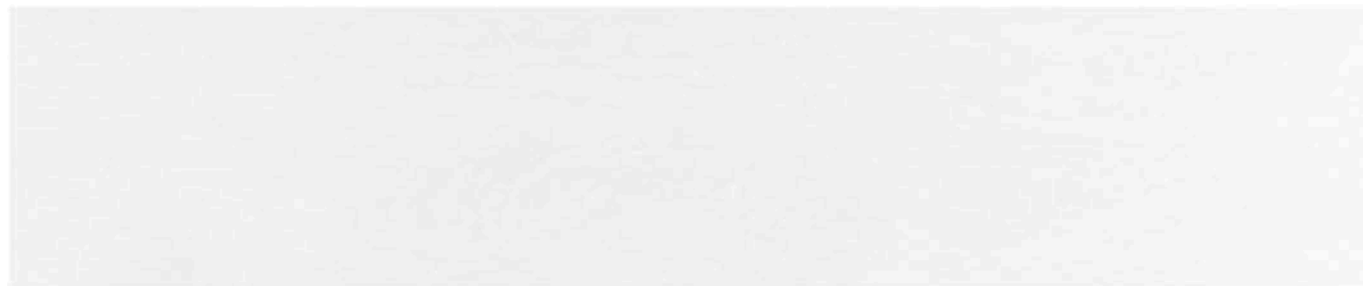


ST-204 Marron



ST-206 Choco Fudge

Stratum



ST-101 Clara



ST-102 Marelinho

Stratum



ST-103 Nublado



ST-104 Ardosia



ST-106 Grenicio



ST-105 Moreno

STRATUM



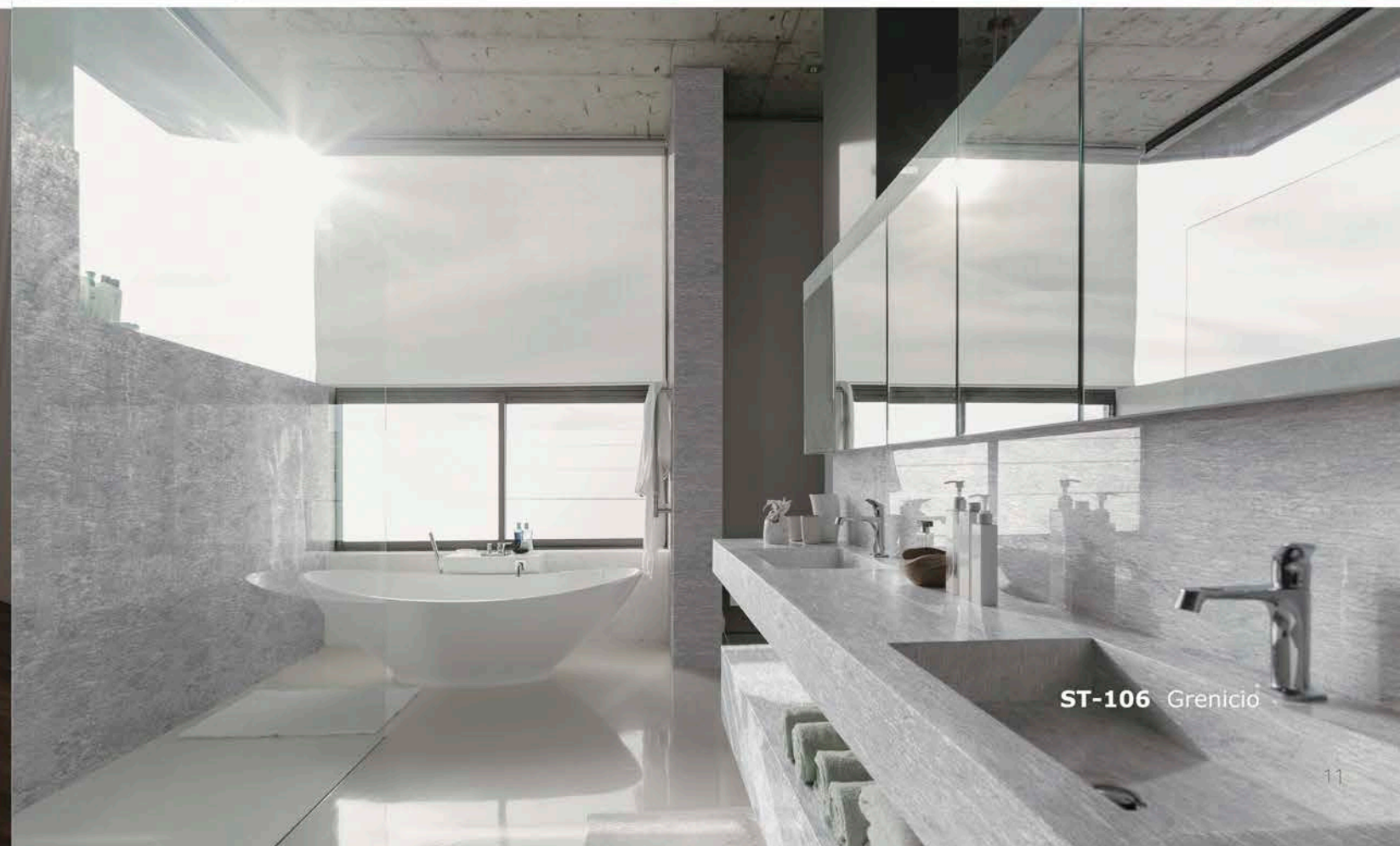
ST-203 Albero



ST-103 Nublado



ST-105 Moreno



ST-106 Grenició



ST-201 Romano



ST-104 Ardosia

BELLASSIMO EPISODE II

Erleben Sie die Größe und Herrlichkeit unserer neuen Kollektion. Inspiriert von der einzigartigen Schönheit der Mutter Erde und der Sehnsüchte der Menschen, diese in Ihrem Umfeld zu harmonisieren, schaffen wir mit dieser Kollektion eine Basis, die Natur mit einer urbanen, luxuriösen Umgebung zu verschmelzen.

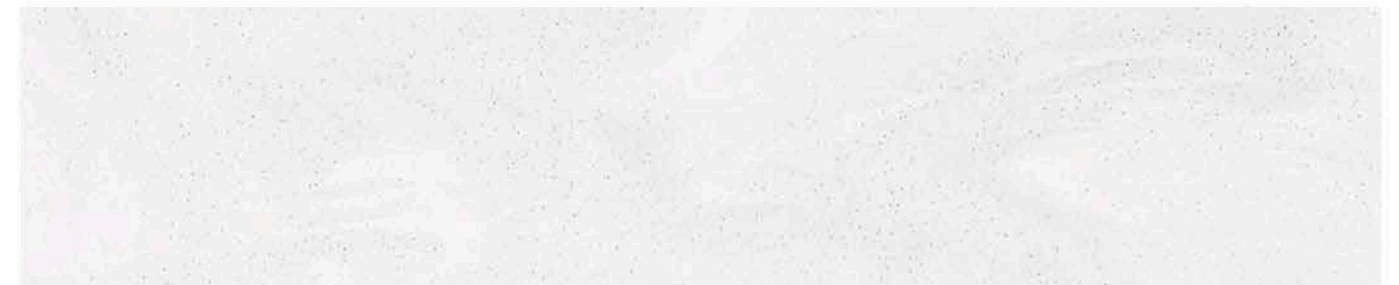
*Discover the greatness and glory of our new collection.
Inspired by the beauty of mother earth and the desires of people to harmonize their environment, with our new collection we create a basis to combine nature with urban, luxurious aura.*



DECOR BL-201 Kashmere

Color Index

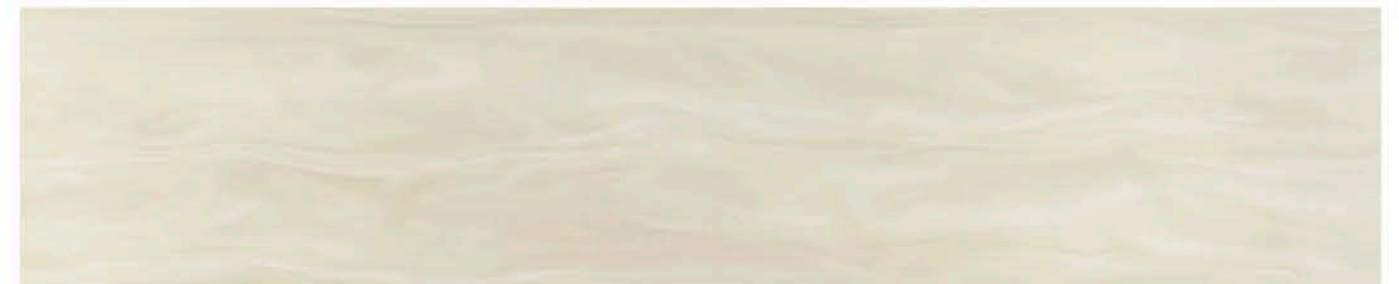
Bellassimo Episode II



BL-217 Mont Blanc



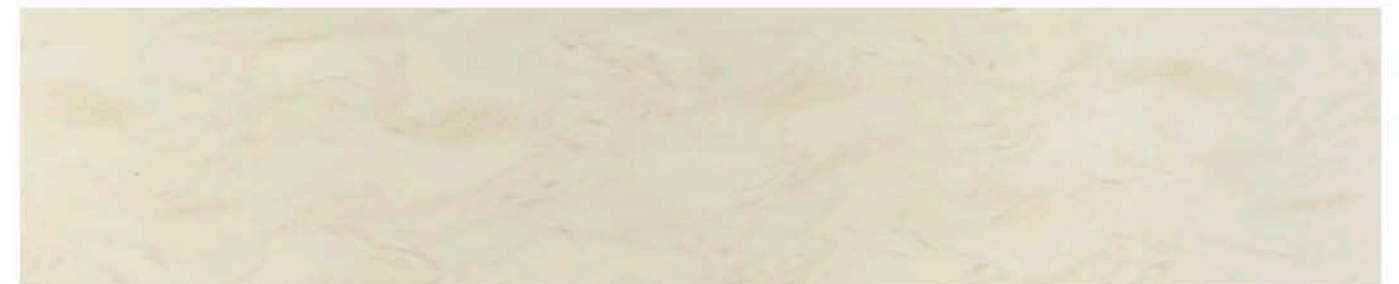
BL-218 Marfim



BL-201 Kashmere



BL-202 Flaxen



BL-251 Cameo

Color Index

Bellissimo Episode II



BL-204 Seaway



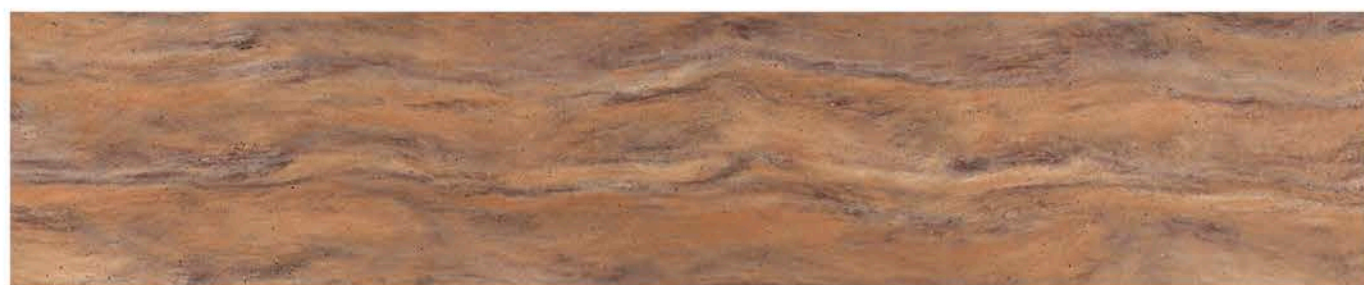
BL-203 Silkwood



BL-205 Sedimentary



BL-206 Slate Grey



BL-207 Bordeaux

Bellissimo Episode II

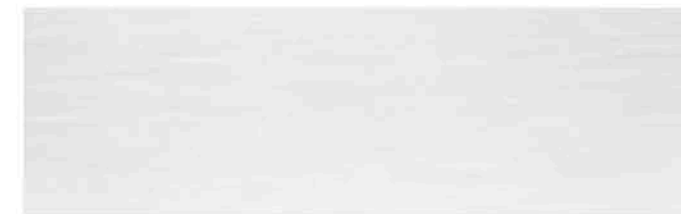


BL-209 Macassar



BL-253 Ebony Timber

Bellissimo



BL-014 Stratus



BL-002 Celadon



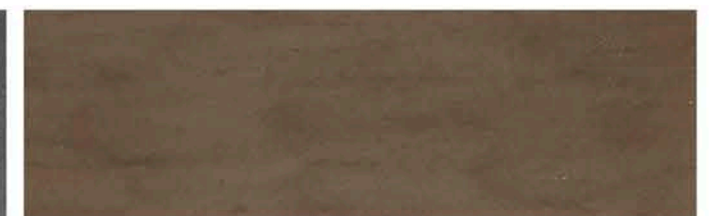
BL-015 Champagne



BL-003 Pietra Panna



BL-016 Cumulus



BL-010 Terracotta



Location New Jersey, USA
Color BL-204 Seaway
Project Private house, Trenton



Location Seoul, Korea
Color BL-201 Kashmere
Project Café Arinco





Location Gwangju, Korea
Color BL-209 Macassar
Project Kitchen Showroom



Location Seoul, Korea
Color BL-203 Silkwood
Project Café Arinco



Location Taipei, Taiwan
Color BL-002 Celadon
Project Team7 Furniture



Location Seoul, Korea
 Color BL-205 Sedimentary
 Project Café Arinco

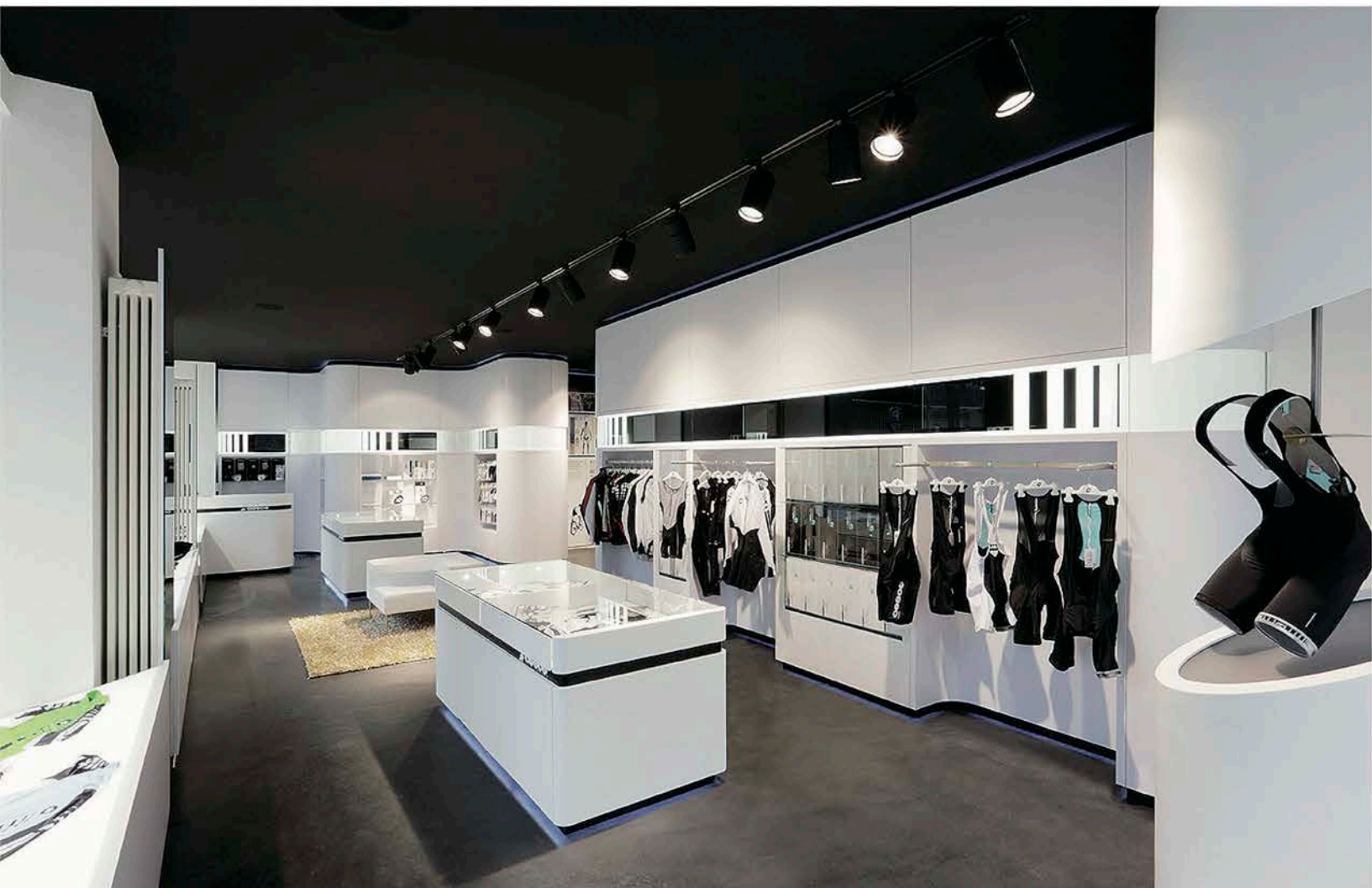


Location Taipei, Taiwan
 Color BL-003 Pietra Panna
 Project Team7 Furniture

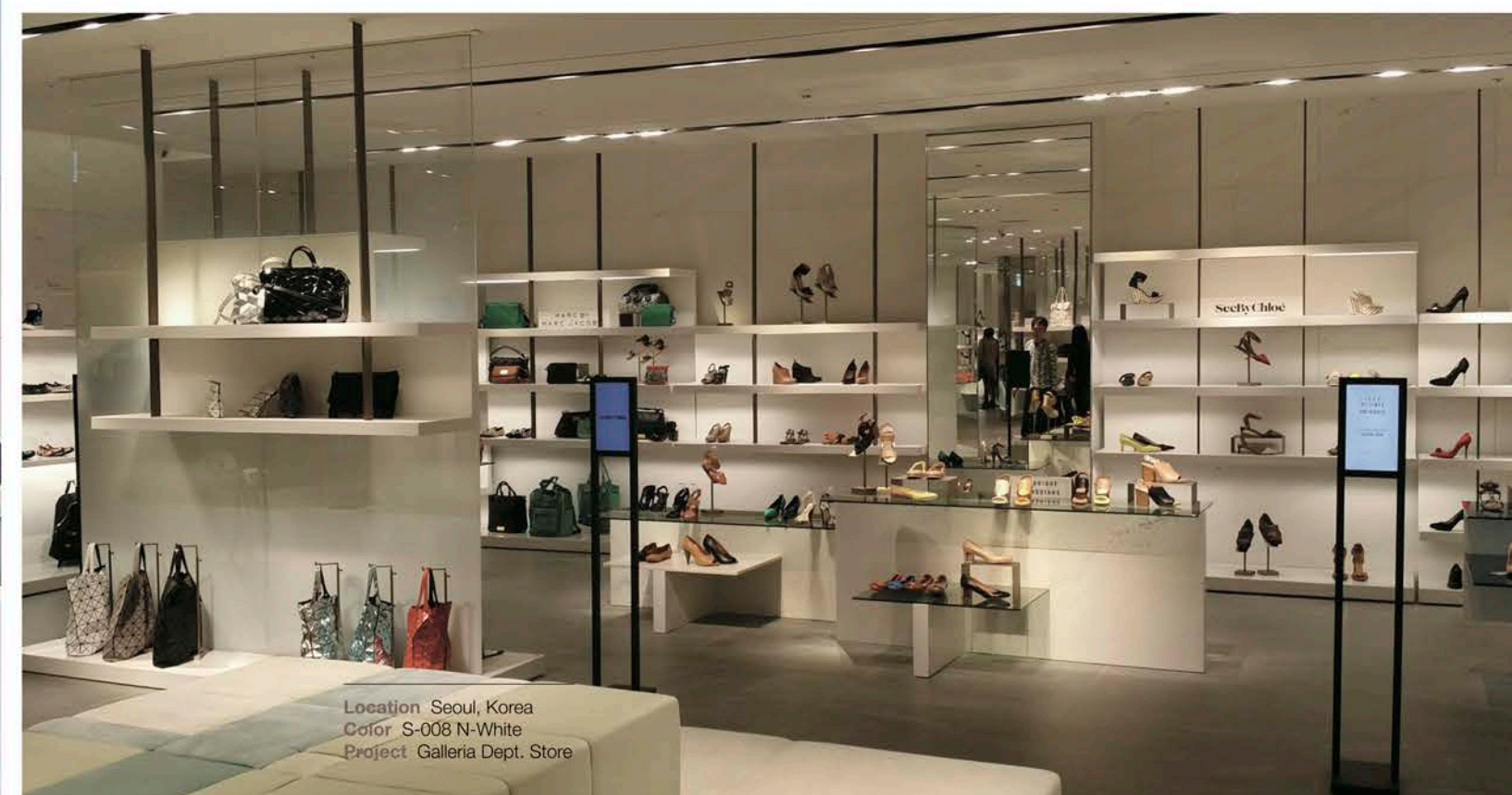
Location Seoul, Korea
 Color BL-201 Kashmere
 Project Center 1



PUBLIC PLACE
COMMERCIAL



Location Frankfurt, Germany
Color S-008 N-White
Project Asos Shop



Location Seoul, Korea
Color S-008 N-White
Project Galleria Dept. Store



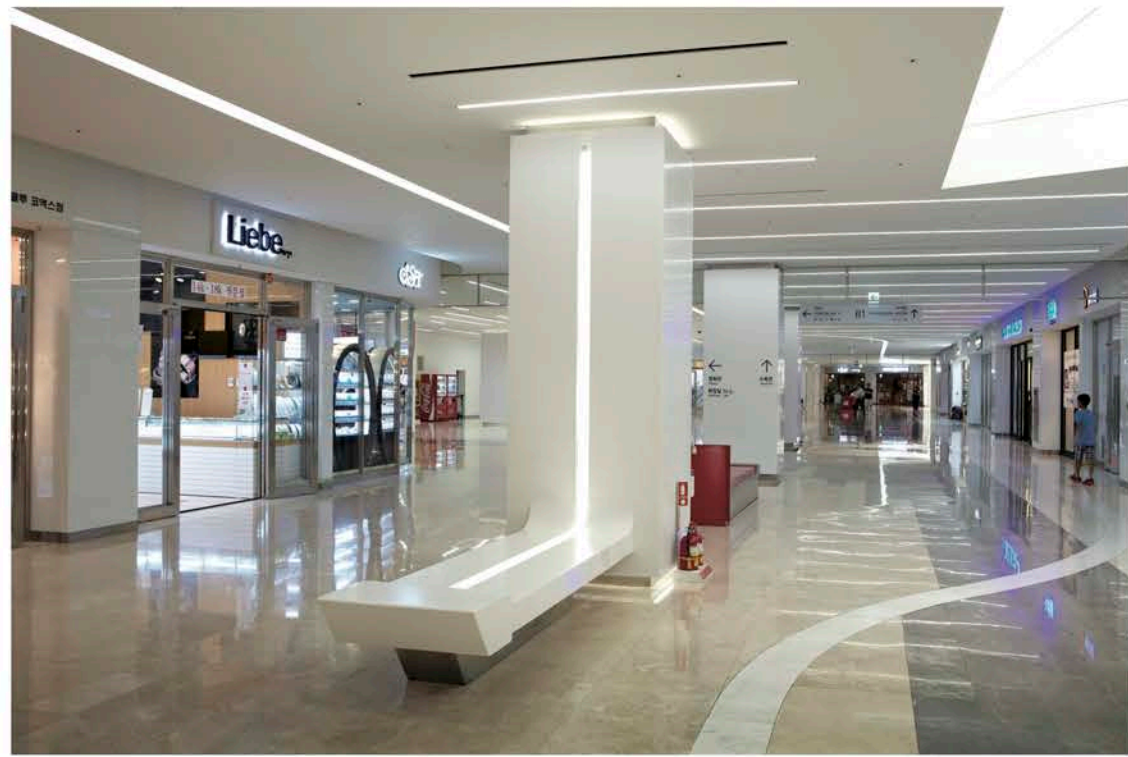
Location Seoul, Korea
Color S-008 N-White
Project Satin Hair Salon



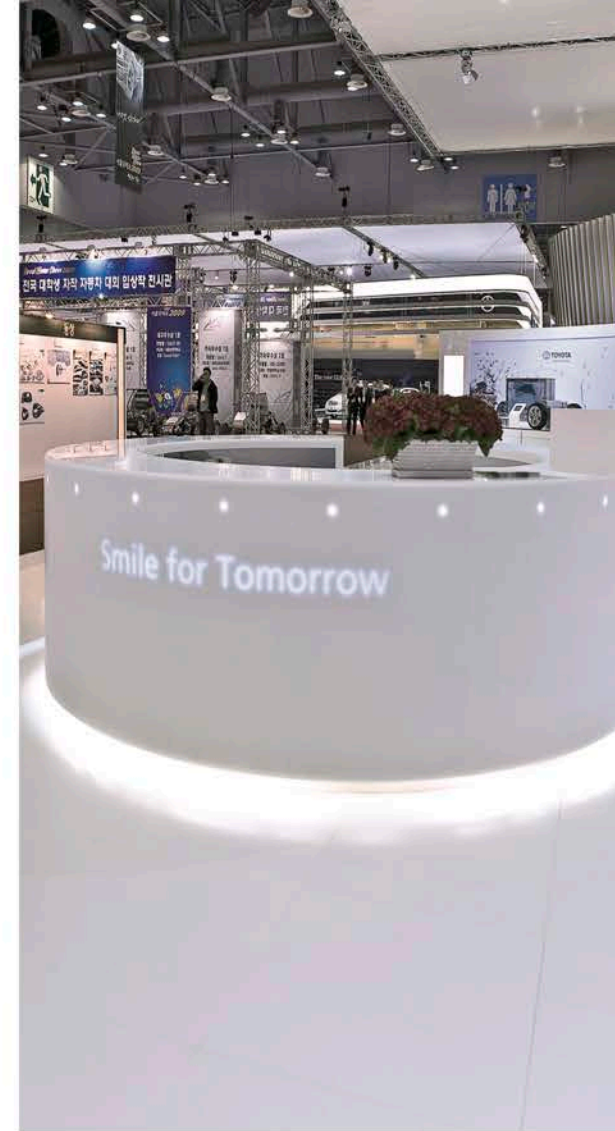
Location Bangkok, Thailand
Color S-008 N-White
Project Nokia Flagship Store



Location Hanam, Korea
Color S-008 N-White
Project L'occitane Store



Location Seoul, Korea
Color S-008 N-White
Project Coex Mall



Location Seoul, Korea
Color S-008 N-White
Project Toyota at Seoul Motor Show



Location Bangkok, Thailand
Color S-008 N-White
Project Zpell Dept. Store

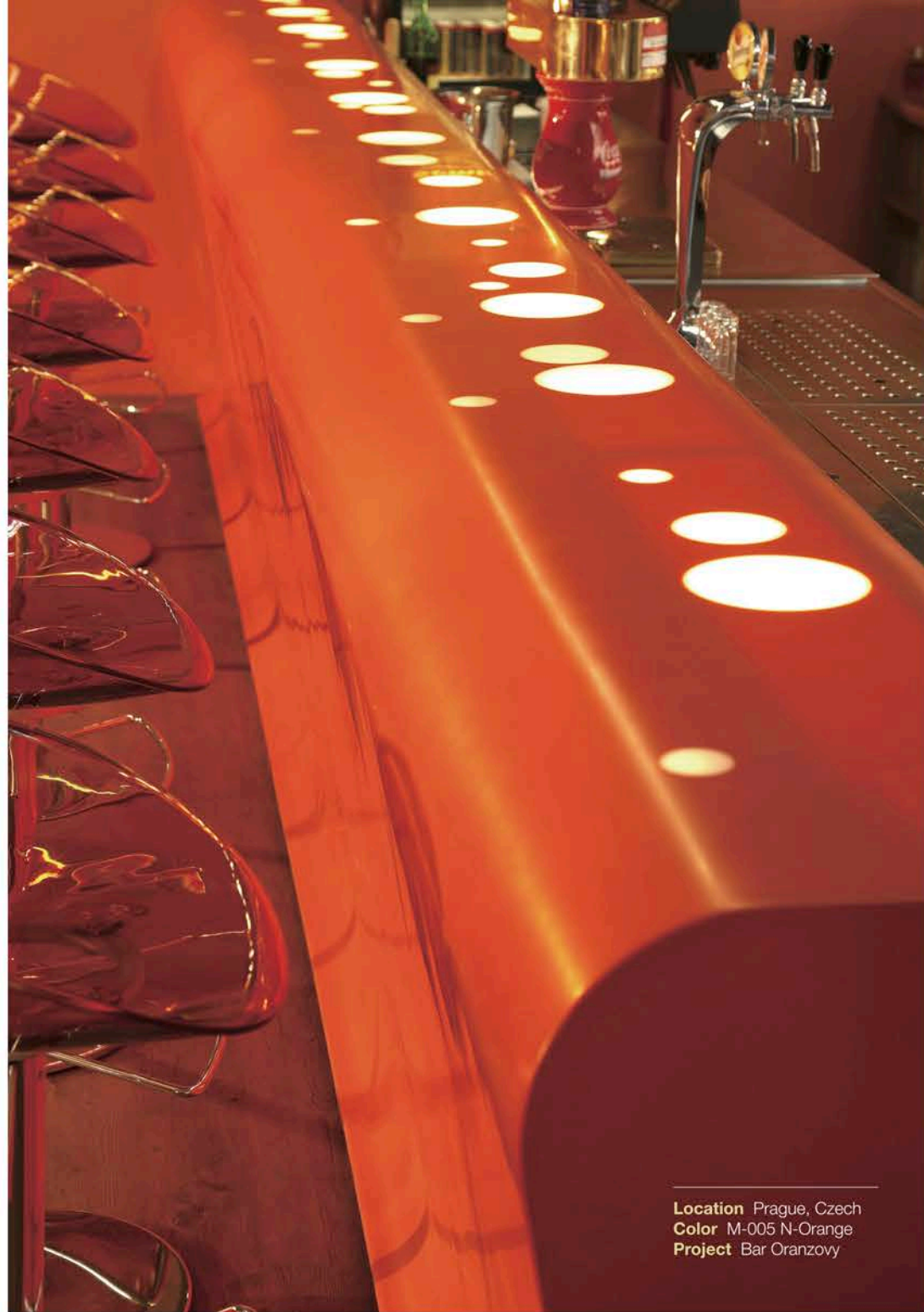


Location Hanam, Korea
Color S-008 N-White
Project Lamy Store

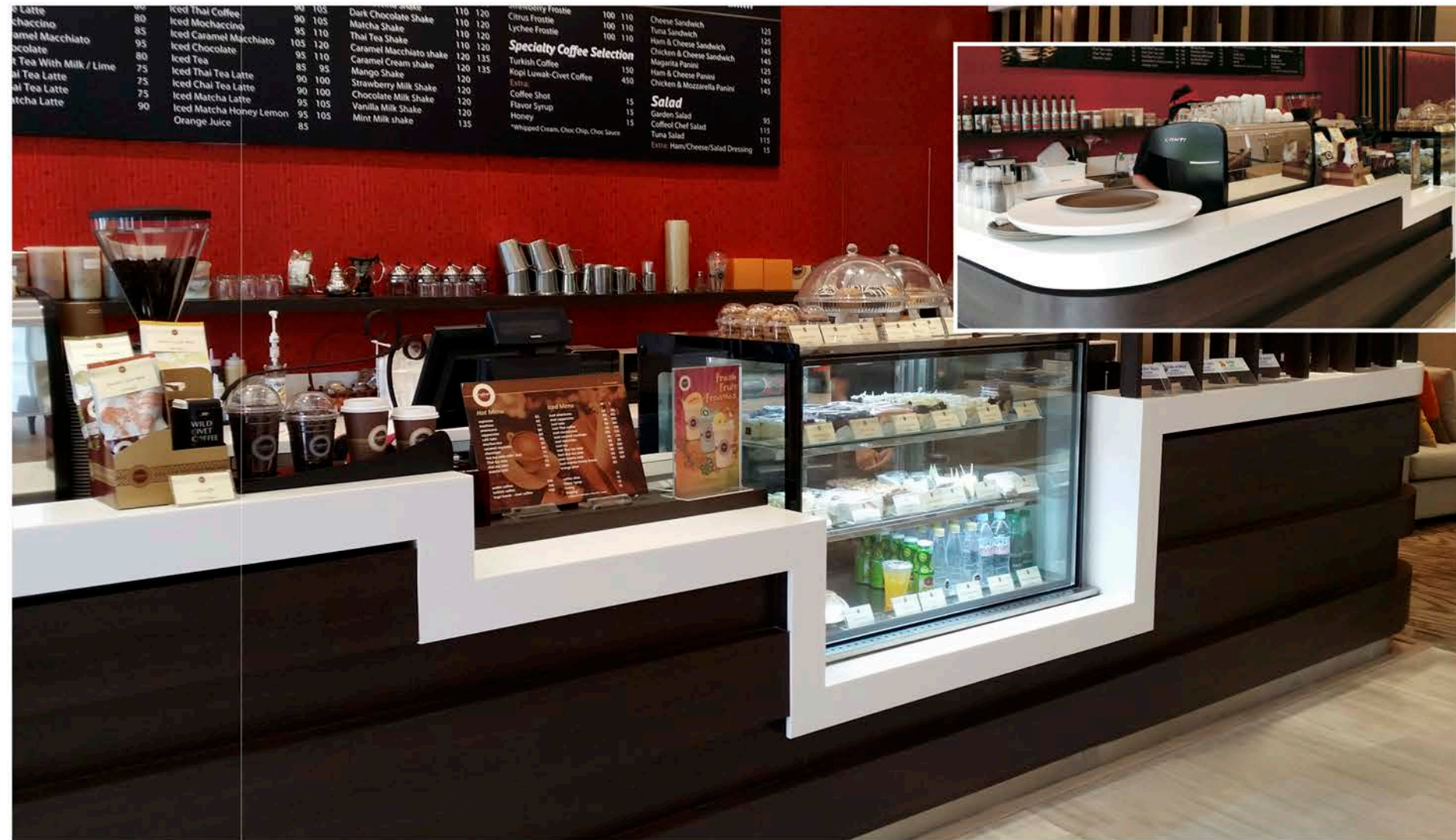


RESTAURANT

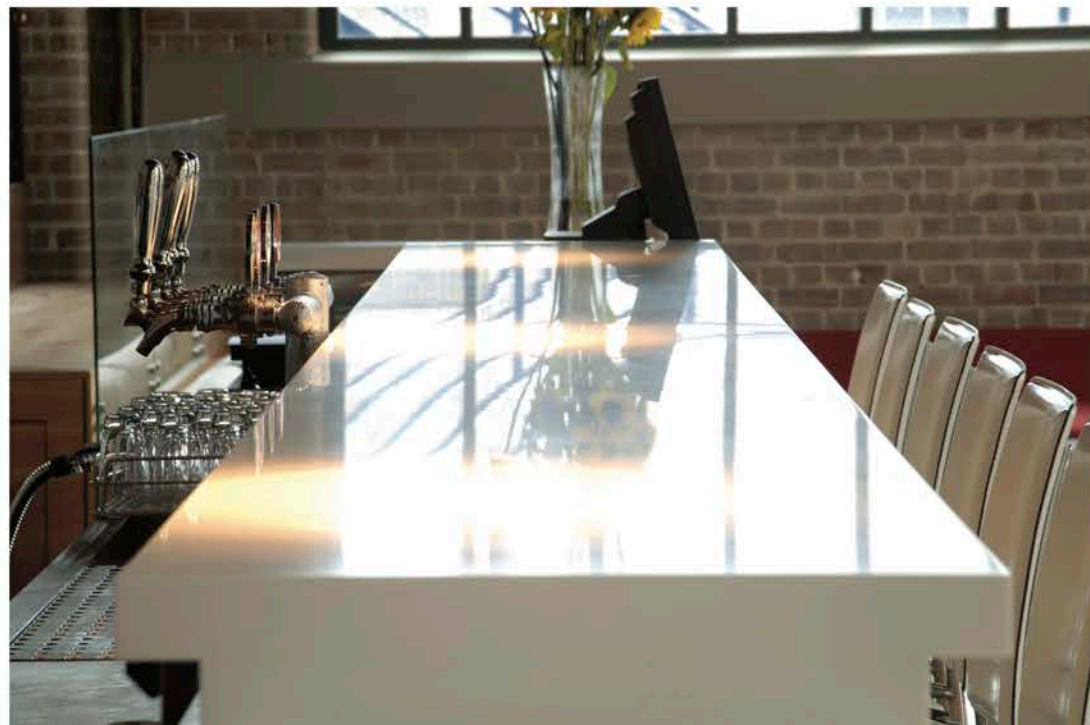
COMMERCIAL



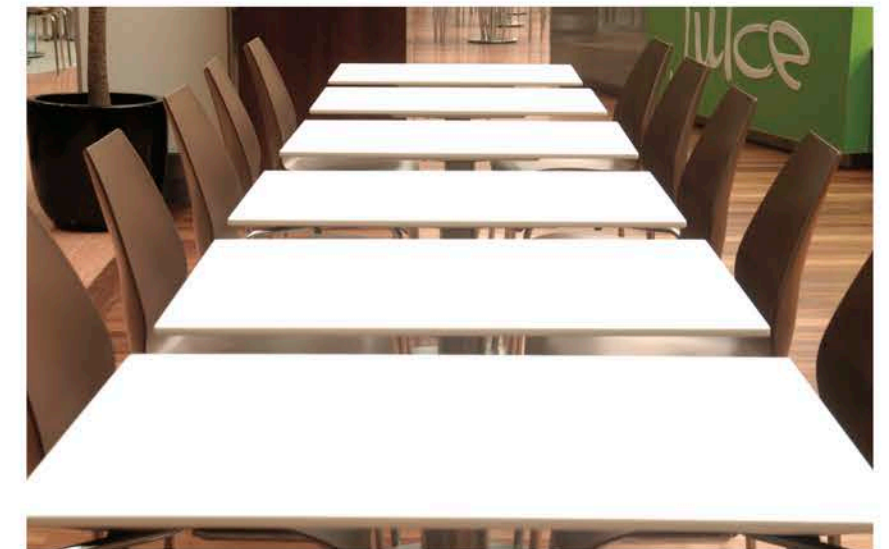
Location Prague, Czech
Color M-005 N-Orange
Project Bar Oranzovy



Location Bangkok, Thailand
Color S-008 N-White
Project Somersat Thailand



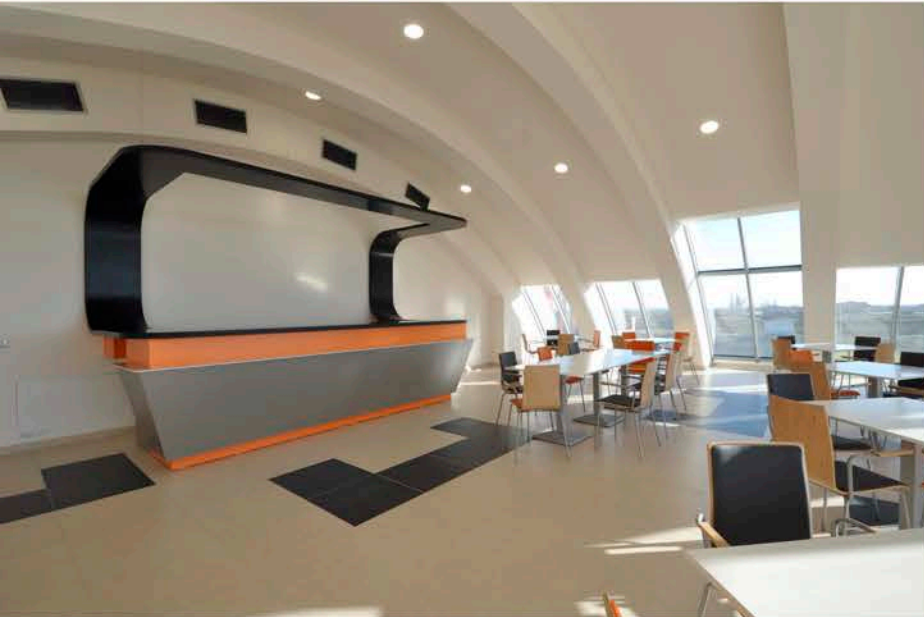
Location Prague, Czech
Color S-008 N-White
Project Bar Oranzovy



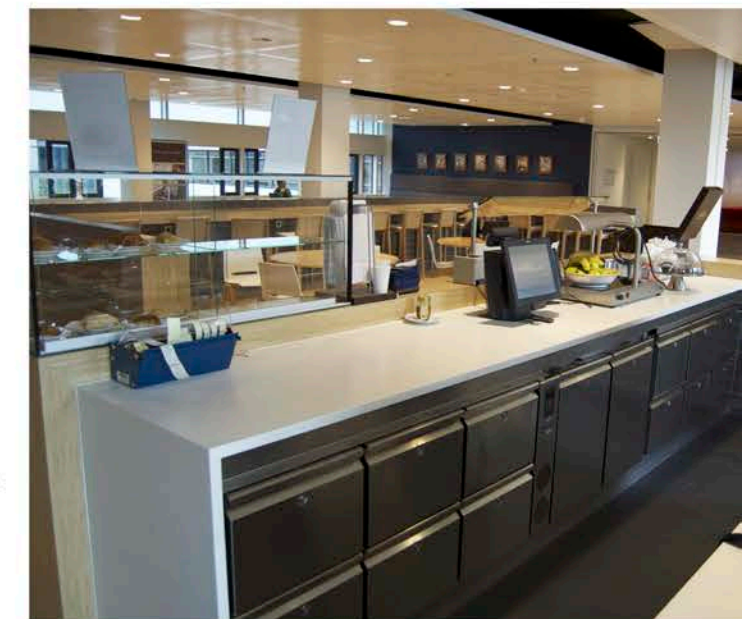
Location Hochiminh, Vietnam
Color S-008 N-White
Project Lotteria



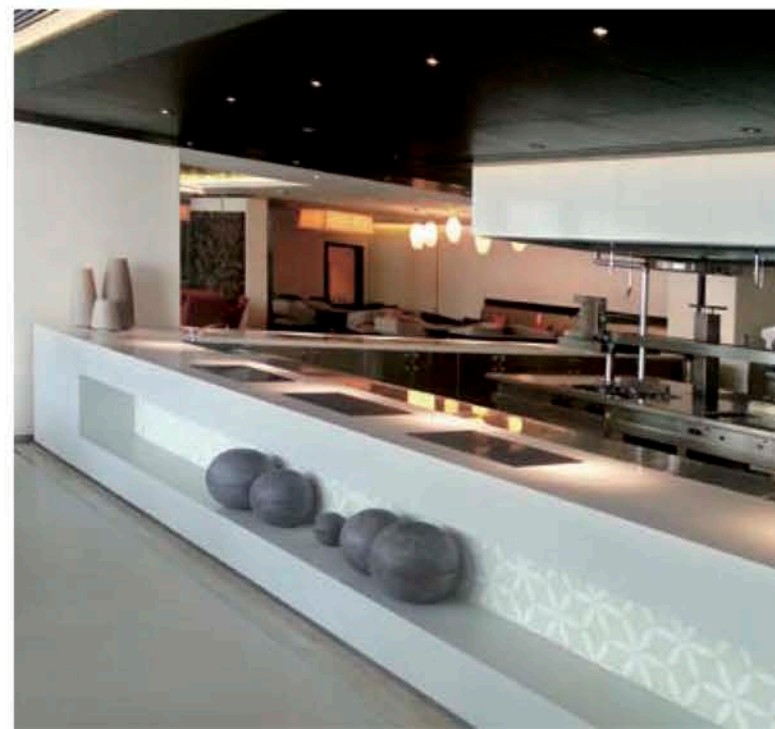
Location Bucuresti, Romania
 Color S-022 Steel
 M-007 Black
 M-005 N-Orange
 Project Galleria Dept. Store



Location Bucuresti, Romania
 Color S-008 N-White
 Project Coffeeshop Company



Location Amsterdam, Netherlands
 Color S-008 N-White
 Project SSS



Location Dubai, UAE
 Color S-008 N-White
 Project Alshafar



Location Seoul, Korea
 Color S-008 N-White
 Project Beans & Berries

OFFICE

COMMERCIAL



Location Seoul, Korea
Color ST-103 Nublado
Project HiTec



Location Bucaresti, Romania
 Color S-008 N-White
 Project Theta

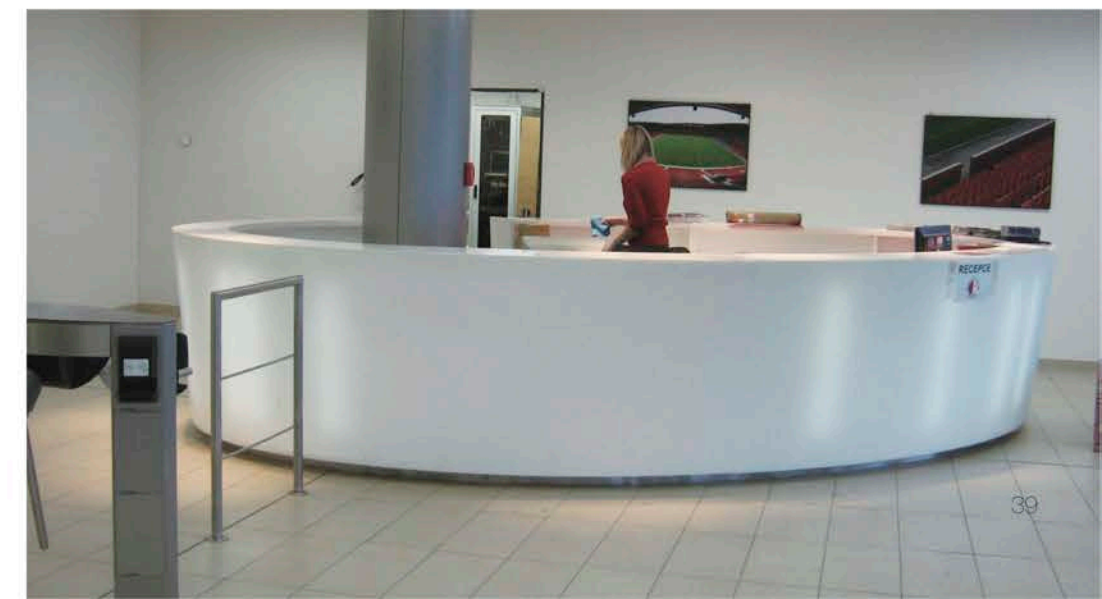


Location Kingston, Canada
 Color C-001 Cubic White
 Project HDR Design



Location Abu Dhabi, UAE
 Color S-008 N-White
 Project Islam Bank

Location Prague, Czech
 Color C-004 Cubic Milk
 Project Slavie





Location Bucuresti, Romania
 Color S-008 N-White
 Project Ethos Reception

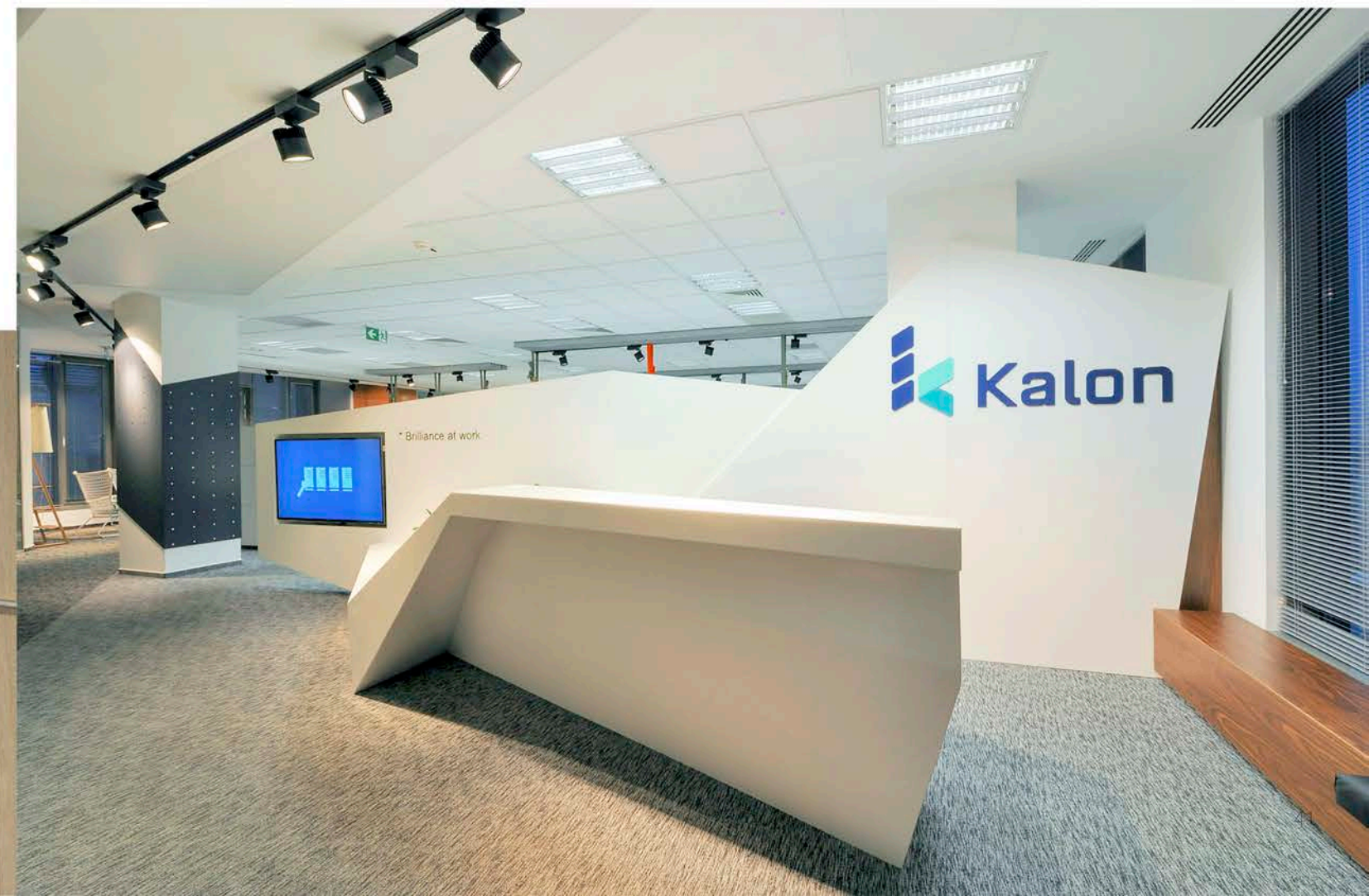


Location Amsterdam, Netherlands
 Color S-008 N-White
 Project SSS



Location Seoul, Korea
 Color BL-207 Bordeaux
 Project Center 1

Location Bucuresti, Romania
 Color S-008 N-White
 Project Kalon Reception



Location Amsterdam, Netherlands
 Color S-008 N-White
 Project SSS

Location Seoul, Korea
Color S-008 N-White
Project Private Dental Clinic



Location Seoul, Korea
Color S-008 N-White
Project Gangnam Public
Convalescent Hospital

Location Seoul, Korea
Color S-008 N-White
Project Gangnam Public
Convalescent Hospital

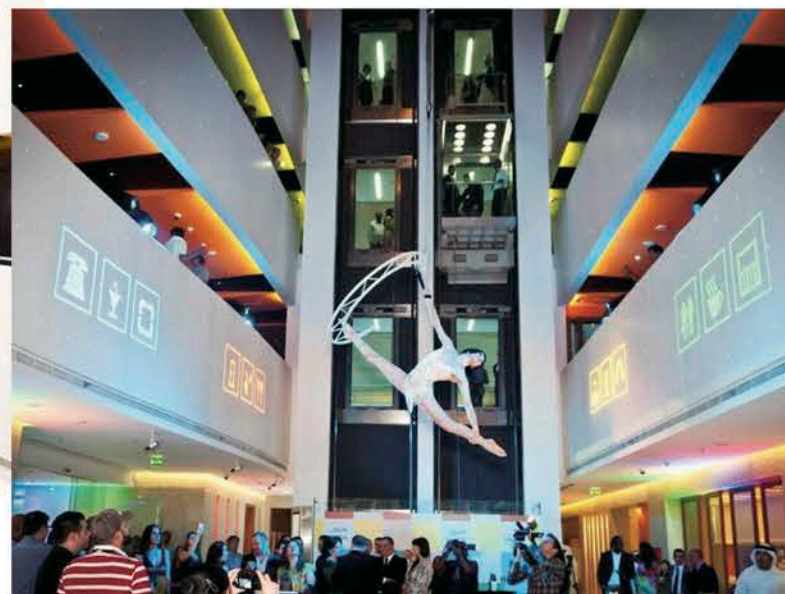
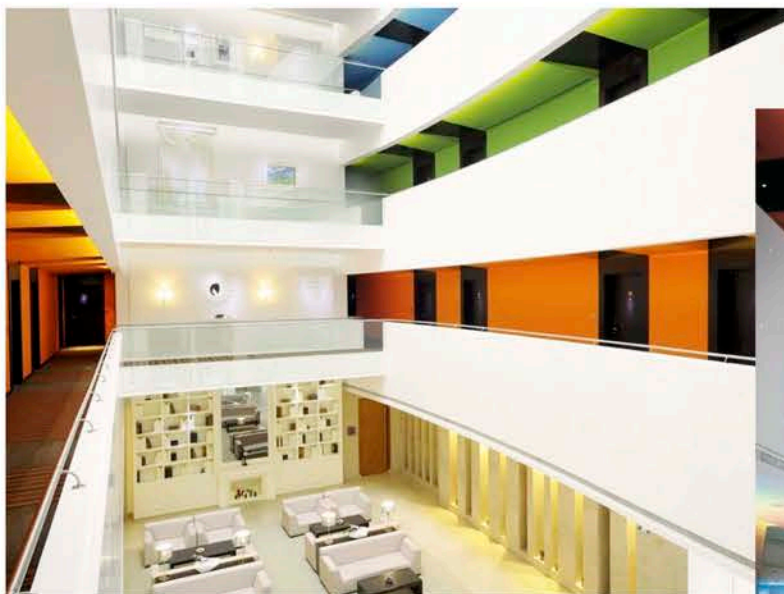


FACADE

COMMERCIAL



Location Shanghai, China
Color S-008 N-White
Project HLTS Office

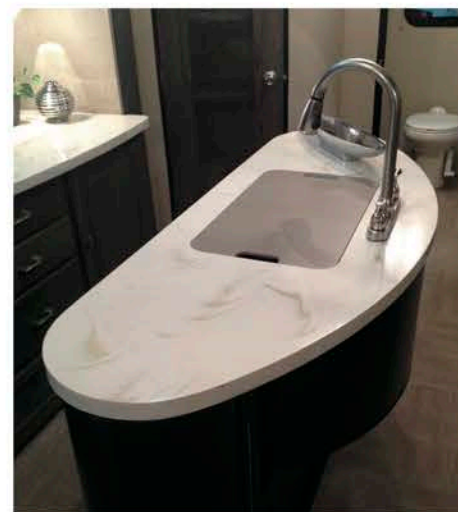


Location Dubai, UAE
Color S-008 N-White
Project HUES Boutique Hotel

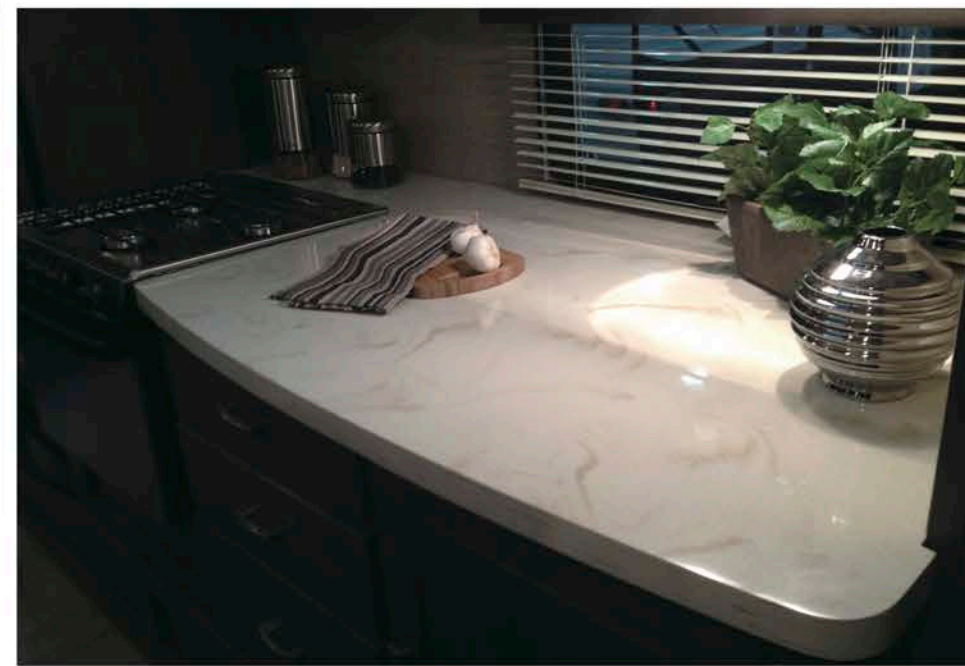




Location Kentucky, USA
Color BL-017 Twister
Project RV Show, Louisville



Location Kentucky, USA
Color BL-017 Twister
Project RV Show, Louisville



Location Gyeonggi, Korea
Color S-019 Brown Fever
Project Doosung Camper Van

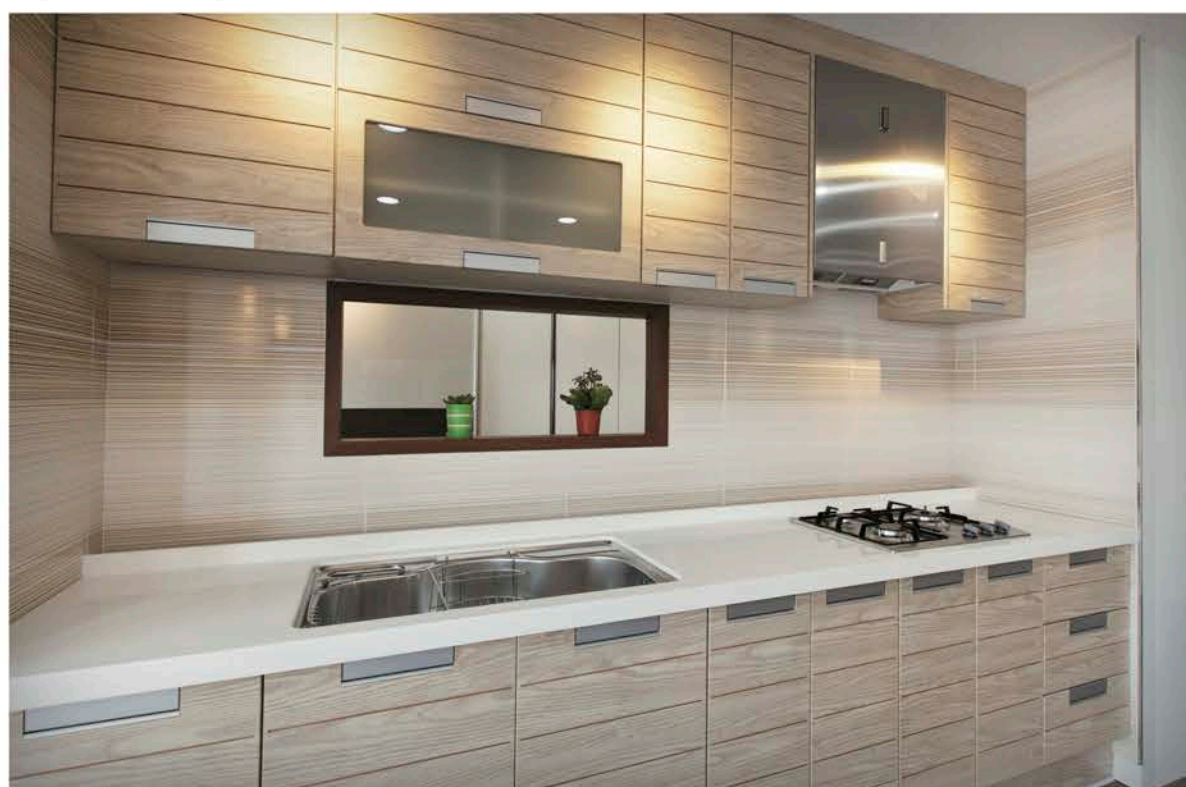
KITCHEN

RESIDENTIAL



Location Taipei, Taiwan
Color GAM-001 Aftersnow
Project Team7 Furniture

Location Jeju, Korea
Color NA-01 Blando
Project Seohan Industry



Location Gyeongju, Korea
Color T-201 Feta Cheese
Project SG Misoziium Condominium



Location Taipei, Taiwan
 Color GAM-001 Aftersnow
 Project Team7 Furniture



Location Seoul, Korea
 Color C-001 Cubic White
 Project Lotte Castle

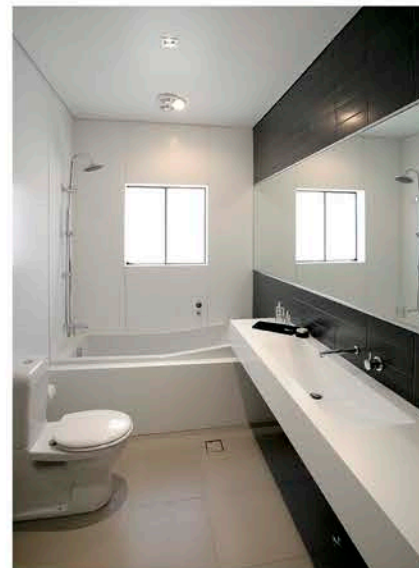


Location Seoul, Korea
 Color S-008 N-White
 Project Hyundai Livart Ritchen



BATH

RESIDENTIAL



Location NSW, Australia
Color S-008 N-White
Project SCF Interiors, Waremba



Location Moscow, Russia
Color S-008 N-White
Project City Hotel

Location Beijing, China
Color S-008 N-White
Project Opera Mall



Location Singapore, Singapore
Color C-001 Cubic White
Project Minton Condominium



Location Seoul, Korea
Color S-008 N-White
Project Hanwha L&C Showroom



Location Daejeon, Korea
Color S-008 N-White
Project Private House

Color Index

Solid



Therapy Collection



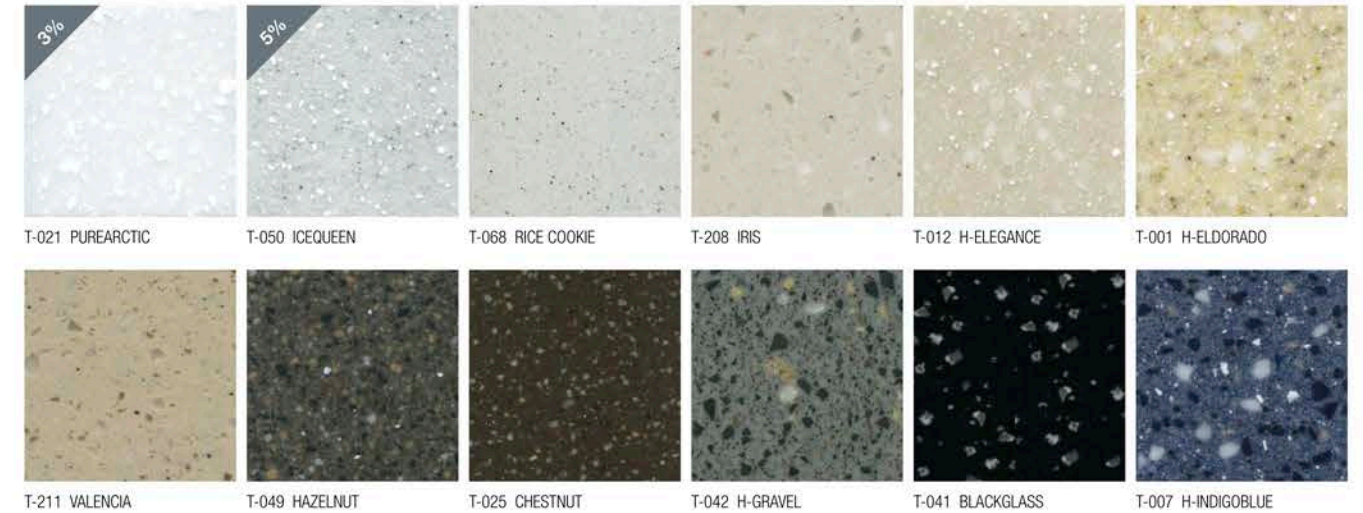
'THERAPY' is the eco-friendly collection which provides the organic and natural look. These products are manufactured with recycled resources so that you could heal the environment with this 'THERAPY' series.

* Colors may vary from actual production

Duo



Trio



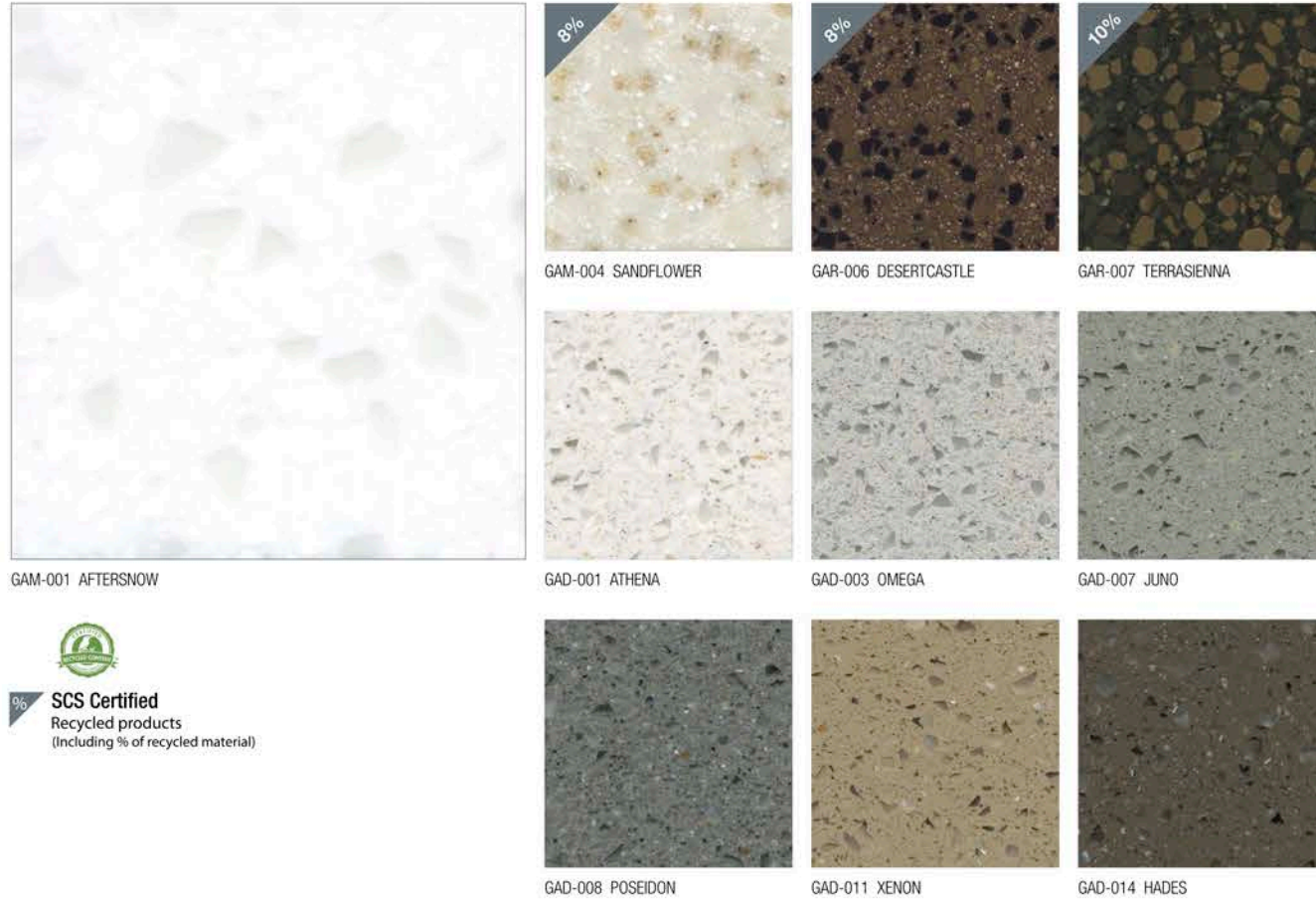
Cubic / Pearl



* Colors may vary from actual production

Color Index

Galleria



Glittering

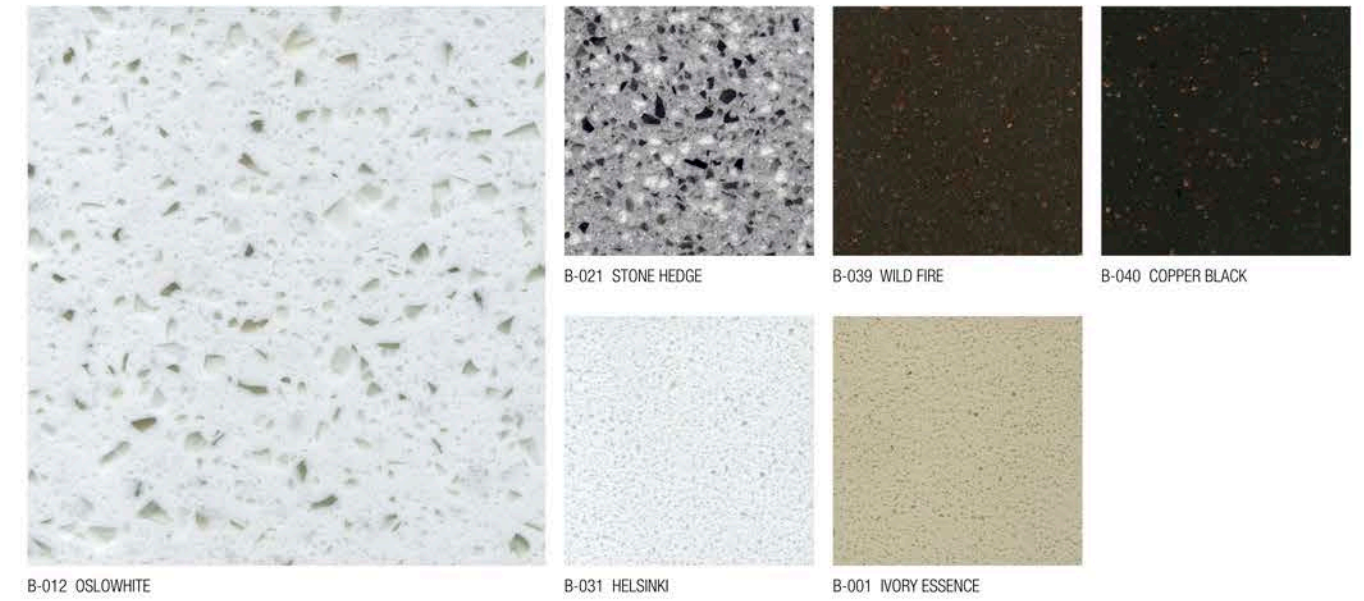


All dark decors are prone to show scratches, dust, haziness and ordinary wear and tear more easily than lighter textured decors. Therefore, these decors are not recommended for use in residential and commercial applications that will be subject to heavy use.

* Colors may vary from actual production

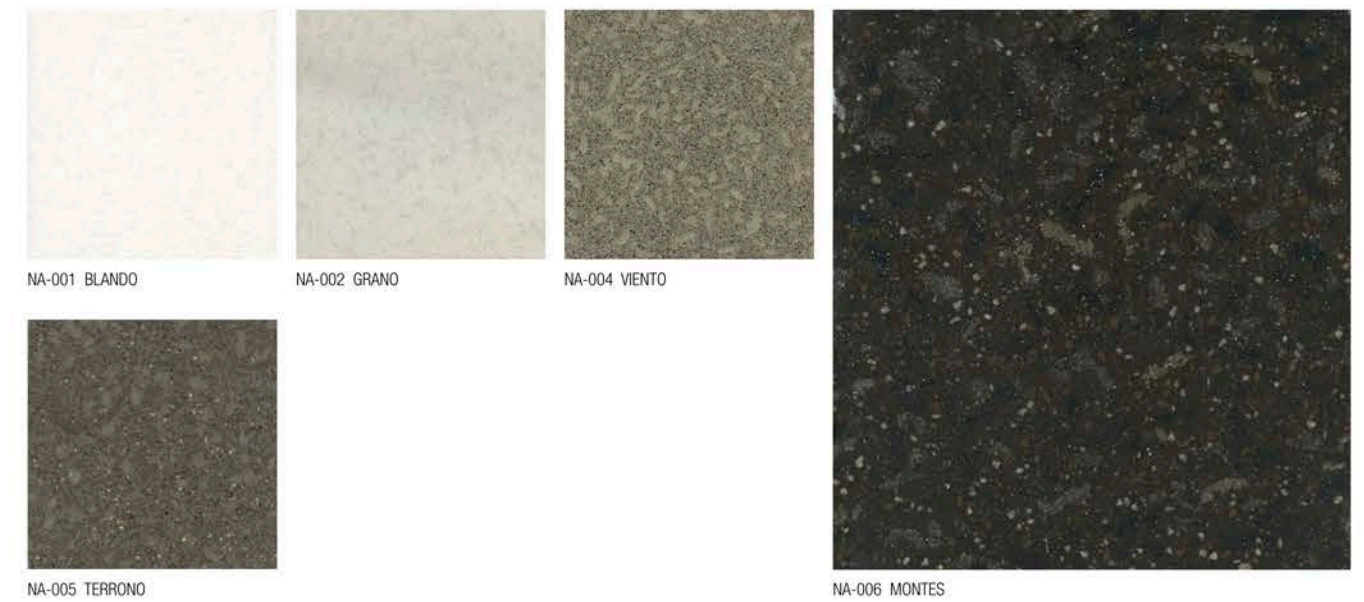
Brionne

Reflects the natural essence of solid stone.



Nativo Collection

The new and premium collection 'NATIVO' resembles distinguished and premium look of nature. The unique atypical chips and tone-on-tone colors in 'NATIVO' create the natural and wild look which solid surfaces never had before.



* Colors may vary from actual production

Hanex® Acrylic Sink & Bowl Program

Beside our broad range of premium solid surface sheets, we are offering a widely diversified range of a sink & bowl program.

Product Specification

Casting Sink & Bowl

main characteristics

- predestined for volume business
- sink
 - single & double sinks

added values

- competitive value-price-quality ratio
- high production volume achievable

color range (without chip)

- S-008 N-White & S-004 Ivory
- other colors upon inquiry

Thermoformed Sink & Bowl

main characteristics

- predestined for high end solutions / personal designs
- sink
 - single & double sinks
 - in combination with stainless steel

added values

- individual design variants achievable
- high-end products in different price ranges available

color range (without chip)

- single-color / two color
- the range of color is limited

Our end products portfolio offer you the appropriate solution for every requirement.

As a competent partner we support you by the preparation of any bidding phase and co-work to develop the best solution for your partner.

In case of any inquiry please send your request to:
info@hanwhasurfaces.eu / subject: sink & bowl program.

Examples by Product Category

Casting Sink



Casting Bowl



Thermoformed Sink



Thermoformed Bowl



Applications



Hanex®

Solid Surfaces

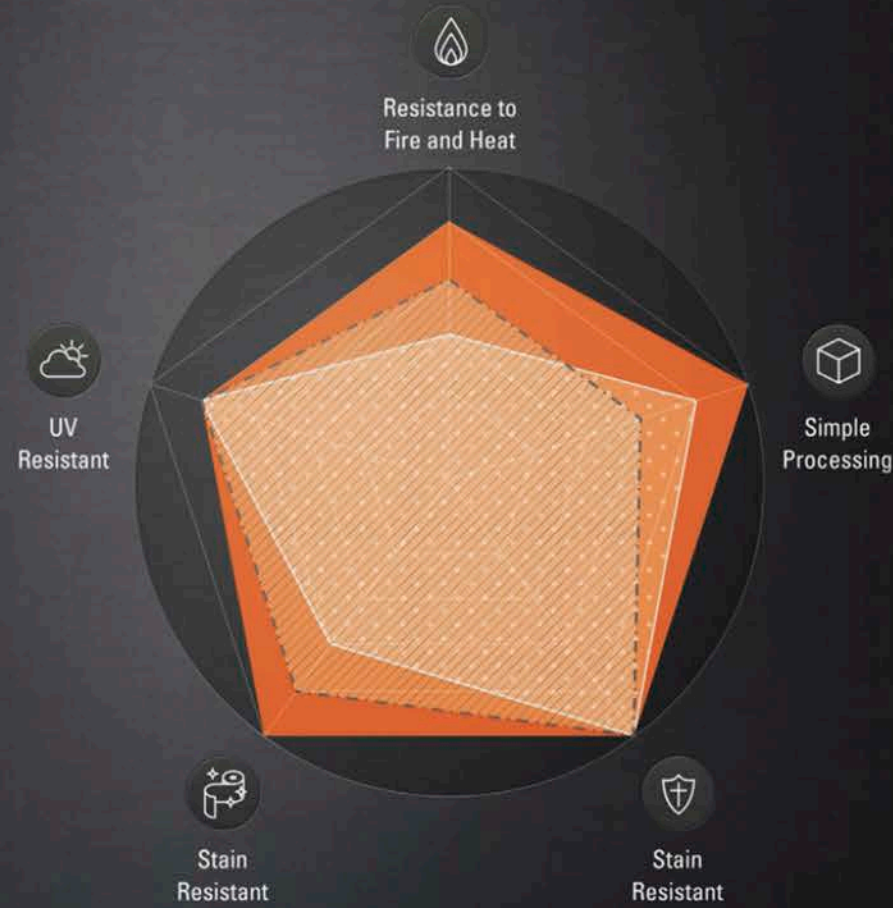
Hanex



Wood



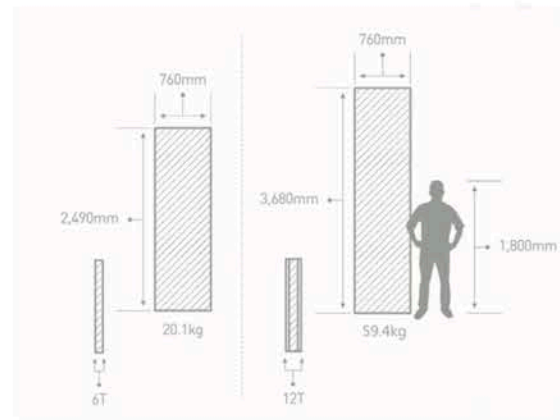
Laminate



Standard Size

To meet your individual requirements we are offering different sheet thicknesses (19mm; 12mm; 6mm) and different dimensions to maximize the economical and efficient usage.

Special colors, patterns and dimensions can be produced on a project based minimum order quantity.



Sheet Thickness in mm	Sheet Width in mm	Sheet Length in mm	Sheets / Pallet	Weight(kg) / Sheet
6	760	2490	40	20.1
6	760	3070*	40	24.8
6	930	2490	30	25.0
12	760	3680	20	59.4
12	930	3680	15	72.3
19	760	3070	10	78.5

* only on request

Certification

Hanex is highly regarded in the environment-friendly materials market with various environmental related certifications such as NSF, Greenguard and SCS.

Environment



ISO 14001 CERTIFICATION

Certification for an environmental management system



GREENGUARD CERTIFICATION

Certification for low chemical emissions

GREENGUARD GOLD CERTIFICATION

Gold certification for low chemical emissions



SGS CERTIFICATION

The chemical analysis of SVHC by SGS



SCS-MC-01974

SCS Global Services certified the minimum of 10% pre-consumer recycled chip

SCS-MC-01975

SCS Global Services certified the minimum of 8% pre-consumer recycled chip

Fire Rating

DIN EN13501-1

Building Material Class B - s1, d0 in all colors

EN13501-1 CLASSIFICATION REPORT

Classification of the reaction to fire behavior according to DIN EN 13501-1

IMO Res. A.653(16)

IMO CLASSIFICATION

Test report on surface flammability of bulkhead, ceiling and deck finish materials



UKAS ACCREDITATION TO ISO 17065 CERTIFICATION

Certification of exterior wall assemblies, cladding, curtain walls, building materials, products and assemblies

Hygiene



NSF CERTIFICATION

Certification for food preparation areas



NSF 51 CERTIFICATION

Official listing conform to NSF/ANSI Standard 51



ANTI BACTERIAL CERTIFICATION

Antibacterial certification by FITI

Processes



ISO 9001 CERTIFICATION

Certification for a quality management system

Hanex® Material Safety Data Sheet

Chemical Product And Company Identification

Material Identification

HANEX (HANEX is a registered trademark of HANWHA L&C CORP.)

Company Identification Manufacturer

HANWHA LIVING & CREATIVE CORP.

7F Center1, 26, Eulji-ro, 5-Gil, Jung-gu, Seoul 100-210, Korea

Contact Details For Information

Hanwha L&C Europe GmbH

Düsseldorfer Str. 13, 65760 Eschborn, Germany

Tel: +49 6196 5869 025 Fax: +49 6196 5869 019

Composition And Information On Ingredients

Component	CAS	%
Polymethylmethacrylate	8011-14-7	>30
Alumina Trihydrate	21645-51-2	<70
Methylmethacrylate (Degradation Product)	80-62-6	<1

Heated above 300 dCe,g "HANEX" can release

Fire-Fighting Measures And Explosion Hazard

Flammable Properties

"HANEX" can be combusted only with difficulty

Hazardous gases/vapor produced in fire are carbon monoxide, methyl methacrylate, aldehydes

Extinguishing Media

Water, Dry chemical, CO₂

Fire Fighting Instructions

Keep personnel removed and upwind of fire

Wear self-contained breathing apparatus

Accidental Release Measures

Safeguard (Personnel)

NOTE : Review FIRE FIGHTING MEASURES and HANDLING (PERSONNEL) sections before proceeding with clean-up

Use appropriate PERSONAL PROTECTIVE during clean up

Spill Clean Up

Recover undamaged and minimally contaminated material for reuse and reclamation

Handling And Storage

Handling (Personnel)

Avoid breathing dust

Avoid breathing fumes generated during sawing, routing or drilling

Handling (Physical Aspects)

Avoid dust generation

Storage

Store in a cool place

Exposure Controls And Personal Protection

Engineering Controls (Ventilation)

Use ventilation that is adequate to keep employee exposure to air borne concentration below exposure limits

Personal Protection

Protective equipment: EYE/FACE PROTECTION

Wear safety glasses during operations such as sawing, sanding, drilling or routing

Toxicological Information

Skin / Eye Irritant Polymethylmethacrylate

The compound is not a skin or eye irritant and is not a skin sensitizer in animals. Single or repeated ingestion produced mild degenerative changes of liver and kidney

Methyl Methacrylate

The compound is a skin irritant, is a moderate eye irritant, and is a skin sensitizer in animals

Alumina Trihydrateyleate

The compound is untested for skin and eye irritant, and is untested for animal sensitization

Acute Toxicity (LC50)

POLYMETHYL METHACRYLATE

>2MG/1, 4hr LC50(Inhalation/Rat)

METHYL METHACRYLATE

7093PPM/4hr LC50(Inhalation/Rat)

Acute Toxicity (LD50)

POLYMETHYL METHACRYLATE

>2000mg/kg, 4hr LD50(Oral/Cat)

METHYL METHACRYLATE

7900PPM/4hr LD50(Oral/Cat)

Ecological Information

BIODEGRADATION

No information is available

BIOACCUMULTION

No information is available

AQUATIC TOXICITY

No information is available

Disposal Considerations

Dispose in accordance with federal, state and local regulation

The owner of the material is responsible for proper waste disposal

Other Information

The data in this Material Safety Data Sheet relates only to the specific material designated herein and does not relate to use in combination with any other material or in any process

Responsibility for MSDS : "HANEX" products

Hanex® Specification

Technical Specification

Sample: Scagliola(HANEX) D

Test Item	Unit	Sample	Result	Test Method
Specific Gravity((23/23)°C)	-	-	1.756	ASTM D792-08(Method A)
Rockwell Hardness(HRM)	-	-	90	ASTM D785-08(Procedure A)
Tensile Strength	MPa	-	43.8	ASTM D638-10(*)
Tensile Modulus of Elasticity	GPa	-	12.6	ASTM D638-10(*)
Flexural Strength	MPa	-	58.8	ASTM D790-10(**)
Flexural Modulus of Elasticity	GPa	-	10.6	ASTM D790-10(**)
Izod Impact Strength	J/m	-	16	ASTM D256-10(Method A)
Water Absorption(24h Immersion)	%	-	0.036	ASTM D570-98(2010)e1
Density(23°C)	g/cm ²	-	1.751	ASTM D792-08(Method A)
Heat Resistance Test	-	-	No Defects	JIS K 6902 : 2008
Hot Water Resistance Test	-	-	No Defects	JIS K 6902 : 2008
Deflection Temperature Under(1.82 Mpa)	°C	-	115	ASTM D648-07(Method B)
Thermal Expansion	1/°C	-	3.93×10 ⁻⁵	JIS K 6911 : 2006

*Specimen: Type I, Speed of Testing: 5 mm/min(Modulus: 1 mm/min)

*Speed of Testing: 5.2 mm/min, Support Span: 190 mm

USAGE: QUALITY CONTROL

The results of the Technical Specification according to European DIN-norms are coming soon.

Hanex® Partner Network in EMEA

